

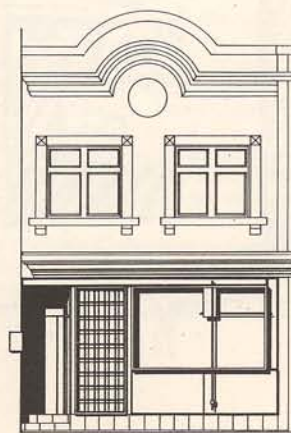
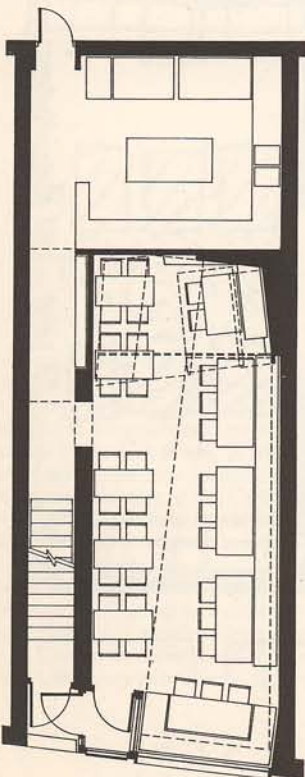
AREA MAGAZZINI GENERALI - EX GAZOMETRI - ITALGAS

PIERCE BIRKENSHAW & COMPANY

The scale alone of the Gazometer ensures it a place amongst the Pantheon of Roman monuments on the cities skyline. Symbolically though, the Gazometer is neither glorious, nor spiritual. Indeed, it might be viewed as an artifact representing the continued malignancy of an industrial age. Through a process of partial effacement of existing conditions and the creation of new layers of inhabitation, this project seeks to re-integrate this site, with the modern city, both symbolically and formally.

Some of these new layers might be typified as: A layer created by excavation and partial demolition to elucidate the industrial archeology of the site, a layer of "civic" machines which, through literal and imaginary processes, purify the earth, air and water, a layer of "primordial" landscape, a layer defining boundaries through public infrastructure, and so on.

This strategy will ultimately force a new reading of the site as a public precinct with a benign site ecology.



Design for Massimo Rosticceria

PEARCE BIRKENSHAW & COMPANY

Is a recently formed design firm with a variety of commercial and residential projects. The firm is concerned with adapting architecture to the specifics of it's context and to the demands of it's culture. Current projects are: The Regency Square Office Building Lobby, Massimo Rosticceria, The Jewell-Rung Clothing Agency Showrooms and Offices, and the Cummings Residence.

Prior to forming the firm, Sarah Pearce and Douglas Birkenshaw, both studied at the School of Architecture at the University of Waterloo.

Upon graduation Sarah joined the firm of Jones and Kirkland where she worked on the design and production of the Mississauga Civic Centre. In 1985 Sarah joined A.J. Diamond and Partners where she became an associate and worked on a number of institutional and residential projects. In 1989 Sarah worked for Donald McKay and Co. on the renovations to the S.L. Simpson Gallery and Offices.

In 1983, Douglas joined I.K.O.Y. Architects, a firm which concentrates on the design of "High Technology" buildings, and worked on the W.G. Davis Computer Research Centre at the University of Waterloo. In 1989 Douglas joined Donald McKay and Co. and worked on a custom residence at 111 Park Road in Toronto as well as participating in the Toronto Overpass Competition.

